

FIREPOWER

HS11

GAMING HEADSET

INSTRUCTION MANUAL

ADXHS1125



ADXC 

Contents

Safety Warnings	3
Unpacking	4
Product Overview	5
Headset Connection	6
System Requirements	6
Download the Installation Software	7
Software Installation	7
User Interface - EQ Effects	8
User Interface - Effect	8
User Interface - Microphone	9
User Interface - Virtual 7.1	9
Hints and Tips	10
Specifications	10

Safety Warnings

- Read all the instructions carefully before using the unit and keep them for future reference.
- Retain the manual. If you pass the unit onto a third party, make sure to include this manual.
- For traffic safety, do not use the unit while driving or cycling.
- Listening to loud sounds for prolonged periods of time may permanently damage your hearing.



Before putting on the unit, turn the volume down then put the unit on and slowly increase the volume until you reach a comfortable listening level.

Thank you for purchasing your new product.

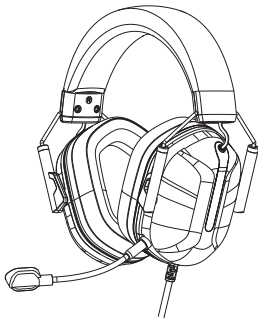
We recommend that you spend some time reading this instruction manual in order that you fully understand all the operational features it offers. You will also find some hints and tips to help you resolve any issues.

Read all the safety instructions carefully before use and keep this instruction manual for future reference.

Unpacking

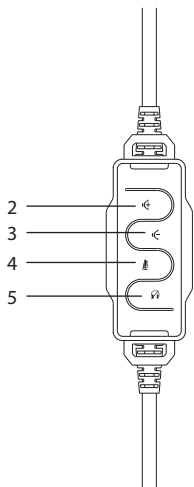
Remove all items from the packaging. Retain the packaging. If you dispose of it please do so according to local regulations.

The following item is included:



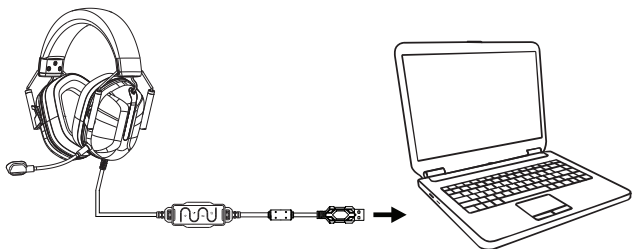
Gaming headset

Product Overview



1. **Microphone**
2. **🔊 Volume + Button**
3. **🔊 Volume - Button**
4. **🔊 Microphone On/Off Button**
5. **🔊 Headphone On/Off Button**

Headset Connection



System Requirements

Operating Systems: Microsoft® Windows® 10 / 11

Hardware: 1 available USB A port

Download the Installation Software

1. Plug the unit into the USB port of your computer.
2. Download the latest gaming software from <https://downloads.adxgaming.com> (under **SOFTWARE DOWNLOADS**).

Software Installation

1. Run the software installer (**ADX ADXHS1125 setup.exe**).
2. Click "**Next >**" to start installation.



3. After the installation is complete, select "**Yes**. **Restart now**" to restart your computer. Click "**Finish**" to confirm.





- To access the user interface, you can find the installed software in the **System Tray**. Look for the software's icon in the System Tray to bring up the user interface on your desktop.
- You may **"Save"** your settings and **"Load"** it when desired.

User Interface - EQ Effects

After launching the software, select **"EQ"**.

EQ and 3D effect settings

- Select **"EQ on"** for EQ effect, and **"3D on"** for 3D effect.

Profile 1/2/3/4

- Select one of the profiles, adjust the level on **60 Hz / 300 Hz / 1200 Hz / 3600 Hz / 12000 Hz** from **-inf db** to **12 db**.
- Select **"Reset"** to reset all levels to **0 db**.



User Interface - Effect

After launching the software, select **"Effect"**.

- Select different **Effect** between **"None"**, **"Theater"**, **"Bathroom"**, **"Living Room"** and **"Corridor"**.



User Interface - Microphone

After launching the software, select **"Mic"**.

- Set the microphone sound level from **0** to **100**.
- Select **"Mute"** to mute the microphone.
- The microphone level meter shows audio input level.



User Interface - Virtual 7.1

After launching the software, select **"Virtual 7.1"**. It allows for personal calibration to fit for your ears, enabling you to configure to your perfect individual setting.

- After selecting **"Virtual 7.1"**, you may further select between **"CCW"** (counter clockwise) and **"CW"** (clockwise) for the rotating direction.
- Select **"Reset"** to reset the default settings.



Hints and Tips

- Make sure the plug is fully plugged into the port of your device, and the device is on, or try to use a different USB port.
- If the unit is not working properly, re-insert the plug(s) into the port(s) of your device.
- If the software is not working properly, uninstall it and then reboot the computer. Re-install the software.

Specifications

Model	ADXHS1125
Rating	5 V 100 mA
Frequency Range	20-20,000 Hz
Speaker Sensitivity	103dB \pm 3dB
Impedance	32 Ω \pm 15%
Speaker Diameter	50 mm
Speaker input power	20mW / 30mW max
Microphone Sensitivity	-28 \pm 3 dB
Directivity	Omnidirectional
Dimension	175 \times 95 \times 198 mm
Net Weight	368 g

Features and specifications are subject to change without prior notice.

Currys.co.uk

All the support you need.

Whether it's a tech emergency or you need plain good advice, we're always on hand to help.

UK: 0344 561 1234

IRE: 0818 810575

Partmaster
CO.UK

Visit
Partmaster.
co.uk

today for the easiest way to buy electrical spares and accessories. With over 1 million spares and accessories available we can deliver direct to your door the very next day. Visit www.partmaster.co.uk or call 0344 800 3456 (UK customers only). Calls charged at National Rate.



The symbol on the product or its packaging indicates that this product must not be disposed of with your other household waste. Instead, it is your responsibility to dispose of your waste equipment by handing it over to a

designated collection point for the recycling of waste electrical and electronic equipment. The separate collection and recycling of your waste equipment at the time of disposal will help conserve natural resources and ensure that it is recycled in a manner that protects human health and the environment.

For more information about where you can drop off your waste for recycling, please contact your local authority, or where you purchased your product.

Windows is a registered trademark of Microsoft Corporation in the United States and other countries.

All trademarks are the property of their respective owners and all rights are acknowledged.

Currys Group Limited (co. no. 504877)
1 Portal Way, London, W3 6RS, UK

EU Representative

Currys Ireland Limited (259460)
3rd Floor Office Suite
Omni Park SC, Santry, Dublin 9, Republic of Ireland